

**UNIVERSITY OF THE PACIFIC,
ARTHUR A. DUGONI
SCHOOL OF DENTISTRY**

**DENTAL CANDIDATE
INFORMATION SHEET**

WESTERN REGIONAL EXAMINING BOARD

(June 7 – June 10, 2019)

The University of the Pacific, Arthur A. Dugoni School of Dentistry is making its facility available to the Western Regional Examining Board (WREB) as a testing site only. This handout is intended to address questions you may have regarding the facility and its role in the examination. If you need any additional information or clarification, please contact the Clinic Operations Manager, Hilary Djeng, at (415) 929-6445. However, please do not call the school for any interpretation of material contained in your Candidate Manual. Questions regarding the examination itself (content, patient requirements, paperwork/forms, etc.) should be directed to the WREB office (602-944-3315)

PATIENT PROCUREMENT

You must provide your own patients. The School of Dentistry will **not** furnish any patients or make any of its clinic records available either for screening or for use during the examination. Further, the School has no external sources from which potential patients can be drawn. You are strongly advised to bring your own patients with you. If you cannot, you will need to explore other alternatives (private practitioners in the area, personal contacts, community shelters, etc.) on your own. Patient brokering, i.e., the selling of patients will not be tolerated under any circumstances within the School of Dentistry and/or on the premises of the University. Violation of this rule will result in immediate removal from the campus of the University.

PATIENT SCREENING

The Clinic and Radiology Department will be available for you to screen your own patients during the week immediately preceding Boards. Screenings may be done in the Clinic by appointments only and the days for screenings are on Monday and Thursday mornings due to chair availability. Appointments must be arranged in advance by calling Hilary Djeng at (415) 929-6445. **No treatment other than screening (clinical/radiographic examination) will be permitted.**

All radiography will be monitor to monitor digital format. If you are planning to have any radiographs taken through our Dental School, you must make arrangements with our Radiology Department at (415) 929-6586. Payment for services must be paid prior to any exposures. Radiograph fees are as follows:

Periapical / Bitewing – first film	\$ 24.00
Periapical / Bitewing – each additional film	\$ 12.00
Bitewing survey – four films	\$ 34.00
Full-mouth survey – 18 films	\$ 77.00
Panoramic	\$ 77.00

If you are planning to send us digital x-rays via email –jpeg to (radiology@pacific.edu), please include your first and last name and candidate number.

PROVISIONAL ACCEPTANCE

Provisional acceptance submission is available for internal candidates only. Deadline to submit radiographs to school designated staff is May 15, 2018.

STUDENT STORE

The school's in-house Student Store is located on the first floor and will be opened M-F, 8:00 a.m.-4:30 p.m. The student store is closed on weekends. Inventory is limited and designed to accommodate our student's needs. Disposable clinic gowns will be available for purchase as long as supplies last. Please plan ahead and make a visit to the Store on the day of Orientation. The store will not be opened on the exam weekend.

TOUR

The Candidate tour of the school is planned for Friday, June 7, 2019, at approximately 12:30 -1:15 p.m. (before the candidate orientation). The tour will start on the 5th floor outside of room 514.

HOTELS

There are many hotels in downtown San Francisco relatively close to the school. Some hotels listed below are within 3-6 miles from downtown. Please search for additional accommodations:

WESTIN	335 POWELL STREET	(415) 397-7000
MARRIOTT	480 SUTTER STREET	(415)398-8900
HOTEL ZETTA	55 – 5 TH STREET	(415) 543-8555
INTERCONTINENTAL HOTEL	888 HOWARD STREET	(415) 616-6500
HILTON	333 O'FARREL STREET	(415) 771-1400
COMFORT INN by the Bay	2775 VAN NESS AVENUE	(415) 928-5000
COVENTRY MOTOR INN	1901 LOMBARD STREET	(415) 567-1200
COW HOLLOW MOTOR INN	2190 LOMBARD STREET	(415) 921-5800
DE VILLE MOTEL	2599 LOMBARD STREET	(415) 346-4664
EDWARD II INN	3155 SCOTT STREET	(415) 922-3000
LANAI MOTEL	2361 LOMBARD STREET	(415) 931-7810
MANOR MOTEL	2358 LOMBARD STREET	(415) 922-2010
S.F. MOTOR INN	1750 LOMBARD STREET	(415) 921-1842
MIYAKO HOTEL	1625 POST STREET	(415) 533-4567
BEST WESTERN	1800 SUTTER STREET	(415) 921-4000
HOLIDAY INN	PINE AND VAN NESS	(415) 441-4000
BROADWAY MANOR INN	2201 VAN NESS AVENUE	(800) 727-6239
THE QUEEN ANNE	1590 SUTTER STREET	(800) 227-3970

Please contact your choices **directly** for information about room rates, and facilities. **Do not call the school for this information. Please note this list is for your convenience. We do not recommend one over the other.**

DIRECTIONS TO THE SCHOOL OF DENTISTRY

The School of Dentistry is located at 155 – 5th Street. (See map on page 12) Entrance into the exam will be on Fifth Street. This entrance is mid-way between Howard and Minna Street. For the examination, we are asking all candidates and patients to enter and exit **ONLY** from this entrance.

From the East Bay

Take Highway 80 west bound across the Bay Bridge. Take the Fifth Street exit off Highway 80. Turn slight right onto 5th Street. Proceed down 5th Street to the corner of Mission and 5th. There is a parking garage on the corner of 5th and Mission.

From the Peninsula/South Bay

From San Francisco Airport, take 101 North to San Francisco. Take the Seventh Street exit. Make a left on Seventh; make a right on Folsom to 5th Street; make a left on 5th Street. There is a parking garage on the corner of 5th and Mission.

Coming from 280 North... Take 6th Street exit; Proceed down Sixth Street to Folsom; Turn right on Folsom for one block and make a left on 5th Street.

If you plan to take Bart, we are located 2 blocks off Market where the Powell Street Station is located.

PARKING

There is a public parking lot located on the corner of Fifth and Mission across the street from the school with hourly rates. We do not validate parking.

Street parking is limited to metered parking and the fine for overtime parking is quite expensive.

FOOD/LUNCH FACILITIES

We will not be offering food service in the building on the weekend. There are many outside food establishments all around our School. At the Westfield Shopping mall, located at 5th and Mission, there is a food court with a variety of eateries available.

EXTERNAL LABORATORY

WREB allows the use of commercial laboratories for the cast gold procedure. The following is a partial list of laboratory services in the area (consult a local phone directory for others that may be available):

CALIFORNIA DENTAL ARTS
Steve and Matt (408) 255-1020

RIGHT BITE 32 DENTAL LAB
(650) 685-7905
PRECISION DENTAL ARTISANS
(415) 931-8418

ROYAL CROWN DENTAL LAB
(510) 835-3441

RICHARD GOH, C.D.T.
(415) 566-2491

HOLLANDER DENTAL LAB
(415) 731-2455

ADVANCED ESTHETICS LAB
JORGE RICO
(510) 234-0353
(510) 772-1150 CELLULAR

PORCELAIN STUDIO
(650) 794-9889

A & J DENTAL ART
(510) 482-0399

LDL DENTAL
(510) 848-0387

SANDCREEK DENTAL ARTS
(510) 522-4215

MICHAEL KENT, C.D.T.
(925) 709-8957 NIGHT

S.F. DENTAL CERAMICS
(415) 892-0692

JOHN JAEGER
(415) 209-6264

CRAIG GITTINGS
(510) 490-2901

CUSTOM CERAMICS, INC.
(415) 398-7906

Inclusion in the above list is not an endorsement by the school of the availability, fairness of price, or quality of work of these companies. You should contact them early enough to ensure availability. You must make your own arrangements concerning pricing and pick/up delivery services and are encouraged to do so well in advanced of the examination. Please arrange for delivery only on the first floor. **Do not arrange for delivery anywhere else. They will not be allowed on other floors.**

EQUIPMENT AND SUPPLIES

The following **clinic** supplies will be furnished during the examination:

Air/water disposable syringe	Hydrogen Peroxide
Amalgam alloy (pre-measured capsules)	Impression materials (Alginate)
Anesthetic – topical and local	Lubricant (Vaseline)
Articulating paper	Masks (cone, tie-on, and earloop)
Bags (trash and sterilization)	Methanol (for alcohol torches)
Calcium Hydroxide (dycal)	Mouthwash
Cements (see following comments)	Needles (27 long & short, 30 extra short)
Cotton – tipped applicators	Bib Holders
Cups-Dixie and plastic medicine	Patient Bib
Disinfectant wipes	Prophy paste
Evacuation & saliva ejector tips	Pumice
Floss – waxed	Rubber dam (nitrile) and napkin
Gauze sponges (2 x 2)	Styrofoam trays (for instruments)
Gloves-powder free (Nitrile)	Tongue blades
Headrest covers	Tray cover
Hemogin	Waxes, various

Available impression materials include alginate and Coe flex only. You must provide any other impression materials you wish to use. Cements on hand include zinc phosphate, zinc – oxide eugenol, IRM, Fleck, Durelon, and ketac.

There will be ultra- sonic units available at our sterilization window. They must be signed out and returned as soon as possible after use. We do not reserve units for anyone.

EQUIPMENT RENTAL

We do not supply instrument set – up trays for any procedures. You must furnish your own equipment (handpieces, burs, hand instruments, anesthetic syringes, casting rings, impression trays, casting gold, etc.). If an item is not on the foregoing lists, bring it with you. The school will assume no responsibility for any omissions in the armamentarium.

We have limited number of rental kits available. If you are interested, please call Hilary Djeng at (415) 929-6445 or email (hdjeng@pacific.edu) to make arrangements.

The **Endodontic** portion of the examination will be given in our Simulation Laboratory on the 5th floor. The teeth* will be mounted in Acadental ModuPro arches, model #E120mQR. The arches will be magnetic mounted onto a typodont and placed into a simulator head that have shrouds. Our bookstore will be able to take orders or have available to purchase the Endo arches. Our bookstore number is (415) 929-6467 or visit our website....www.dentalstudents.com. The School teaches lateral condensation, so the supplies furnished for the examination are listed below:

Chloroform	Gutta percha
Sodium Hypochlorite	Irrigation syringe
Files (#8-#70)	Paper points
Gates Gliddens	Endo sealer
Gauze sponges (2 x2)	ProLube
cavit	

There will be multiple x-ray units in the Simulation Laboratory. Our technicians will be printing post op digital x-rays for submission.

*Please refer to the WREB guidebook for ENDO exam requirements in 2019.

The **Prosthodontic** portion of the examination will be given in our Simulation Laboratory on the 5th floor. The teeth* will be mounted in Acadental ModuPro arches, model #E120mQR. The arches will be magnetic mounted onto a typodont and placed into a simulator head that have shrouds. You will need to provide the mandibular ModuPRO One arch. WREB will provide the maxillary ModuPRO One arch to be treated. Our school will provide the PVS putty material during the exam.

*Please refer to the WREB guidebook for Prosthodontic exam requirements in 2019.

CLINIC OPERATORY EQUIPMENT

Each clinic operatory is equipped with a new Pelton-Crane unit, with operator and assistant chairs. There is no need to request for a left-handed user chair any longer because our units can be used as left or right hand use. Our units are fitted for Star hand pieces but most are currently using Kavo electric hand pieces. There are several amalgamators available in each row of dental chairs.

In each cubicle area, there is a red plastic sharp container. Place all needles, scalpel blades, and other used sharps in these receptacles.

There will be no storage areas available for your equipment in the clinic or the laboratories. You will need to bring and take your dental equipment with you everyday.

EQUIPMENT MALFUNCTIONS

We will have technicians from our Building Operations available all day if you experience equipment malfunction.

CASTING LAB

Casting Lab is available all day and supplies are available for check-out at dispensary windows.

DISPENSARY/STERILIZATION

Our Dispensary windows will be open all day for service. There is a dirty intake window linked with the dispensary area. All dirty instruments must be turned in after each procedure for processing. Our central Sterilization facility is located in the basement and we will process and return the sterilized instrument to the dispensary window in which you received your instruments. Sterilization bags will be available at the Sterilization window. You must clean/bag your instruments and appropriately identify them to insure their return to you. Our sterilization technicians will not accept any items that have been double bagged, taped, or stapled. Label each bag with your candidate number. You will be expected to sign in with your candidate number and how many packages/cassettes you are dropping off. You will then sign out when you retrieve your packages and/or cassettes.

EMERGENCY PROTOCOLS

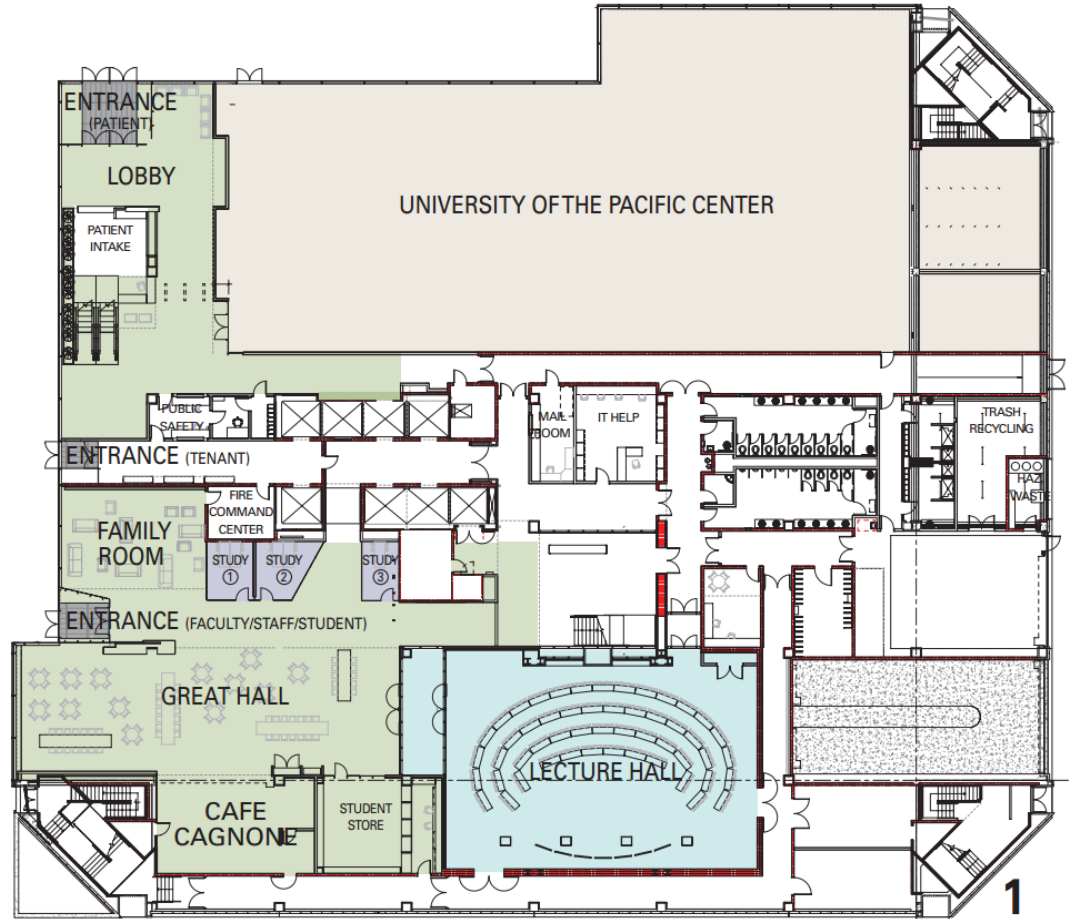
For the management of dental emergencies at our School, a medical crash cart is stationed in our Oral Surgery Department and on the 2nd floor corridor. An Oral Surgery faculty member will be on call throughout the course of the examination. If you should experience any type of medical emergency, follow the prompt of the emergency instructions posted on the back of badges to activate the emergency team.

INFECTION CONTROL

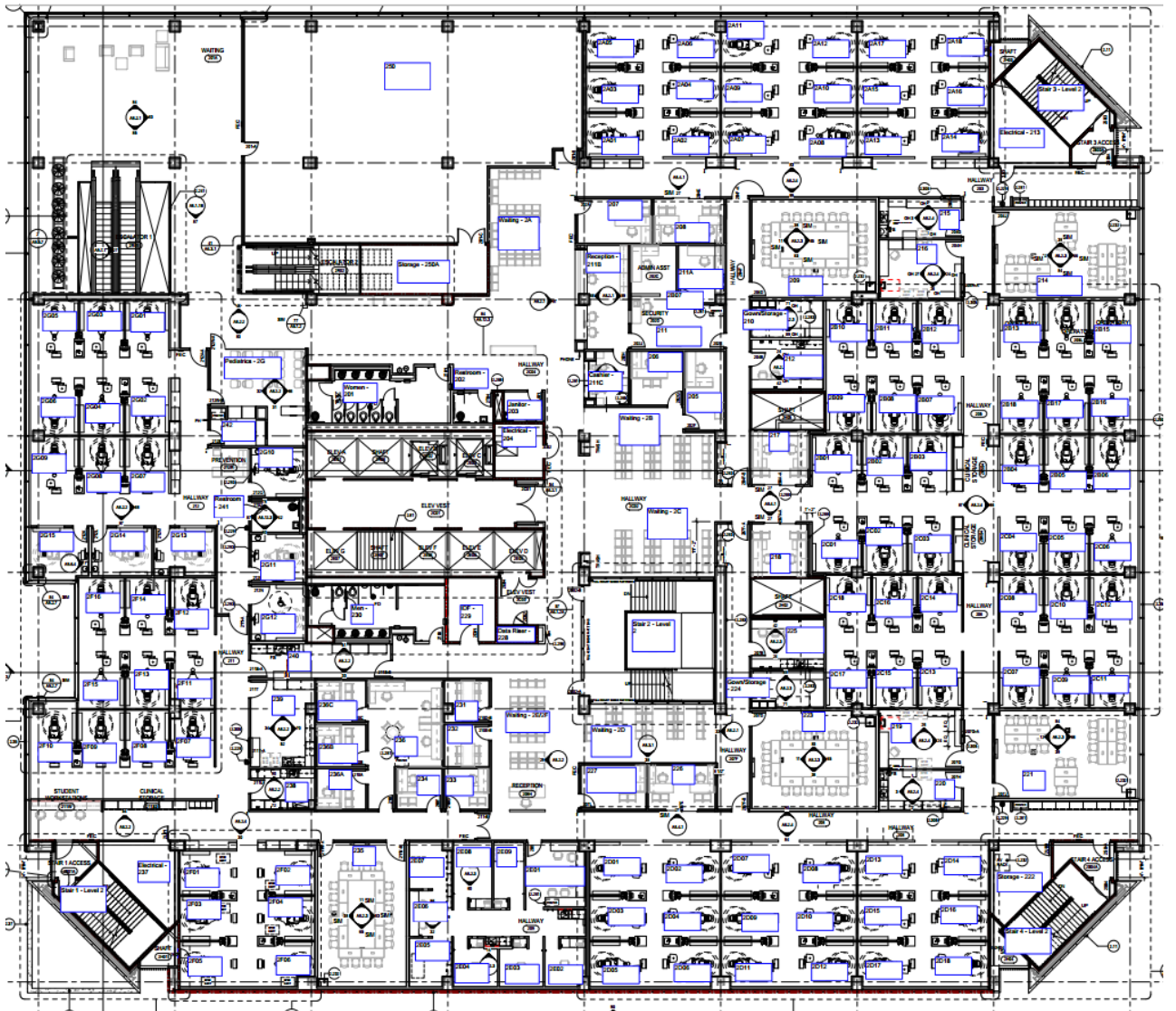
Universal Precautions - The School of Dentistry requires the use of universal barrier protection (gloves, face masks, eyewear with side shields, and protective clothing during all direct patient contact. Barrier covers, nitrile gloves, side shields for eyewear, and facemasks will be made available, but you will be responsible for providing OSHA-acceptable eyewear for yourself, your dental assistant, and your patient.

Clinic Attire – You must provide your own clinic attire, which must meet any standards imposed by WREB. Disposable clinic gowns will be available for purchase in our student store as long as supplies last. They may not be worn outside the clinic area or from one clinic to another.

Surface Asepsis – Each operatory will have disinfectant wipes available for surface disinfection of the clinic operatory (patient chair, operator and assistant carts/tools, light handles, counter tops, etc.).



First Floor



Second Floor



Fifth Floor

Google Maps University of the Pacific, Arthur A. Dugoni School of Dentistry

